

## Welcome to the first Paediatric Research Newsletter!

This is an exciting time to be in research, both at the University and at Sydney Children's Hospital. As some of you may be well aware, we have recently undergone two reviews of research; one for the Sydney Children's Hospitals Network and one for the Discipline of Paediatrics at UNSW. We are currently undergoing a third research review of UNSW Medicine (formerly the Faculty of Medicine).

I am confident that these reviews will help us develop a clear strategic direction and a vision of where we want Paediatric research at Sydney Children's Hospital and UNSW to be in the coming years. Our vision is to be recognised internationally for our research into improving the outcomes of children's health. While we are already recognised in many research areas, it is clear that we need to grow.

We are committed to supporting busy health professionals who are doing outstanding research in a busy clinical environment. The recent appointment of a Research Coordinator (Sam McFedries who edits this newsletter) and the imminent appointment of a Biostatistician will help build research capacity; these positions are there to help you and stimulate Paediatric research across the hospital and University.

Lack of space continues to be a priority and it is our vision that we will have a new building to accommodate research and education for Paediatrics on this campus. We will continue to lobby for this as, without appropriate space, we cannot continue to grow. Discussions are well underway with the University, the Sydney Children's Hospital Foundation and senior hospital management on how we achieve this and there is overwhelming support.

I hope that this quarterly newsletter will be welcomed and keep you informed of progress in research. Please feel free to let me or Sam know of any achievements that should be celebrated or any ideas you have for future articles for this newsletter.

Professor Adam Jaffé

John Beveridge Professor of Paediatrics  
Head of Discipline of Paediatrics  
School of Women's and Children's Health

## In this Edition...

Welcome .....	1
Introducing .....	2
Important Notices .....	2
Researcher Profile: Dr Tony Roscioli .....	3
UNSW MREII 2012 .....	4
Congratulations .....	4
External Review of Medicine .....	4
External Review of Paediatrics .....	4
Library .....	5
eBooks .....	5
Authorship Rules .....	5
Researcher Profile: Dr Michelle Farrer .....	6
Funding Opportunities .....	7
Events · Seminars · Training .....	8
Contact .....	8
Publications .....	9
Next Edition .....	11



## We want to hear from you!



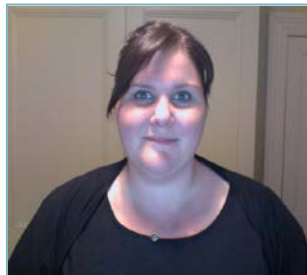
[s.mcfedries@unsw.edu.au](mailto:s.mcfedries@unsw.edu.au)

## Introducing

### Samantha (Sam) McFedries

Research Coordinator, Discipline of Paediatrics,  
School of Women's & Children's Health, UNSW  
Medicine

*My role is to provide research administrative support and to work with Prof Adam Jaffé to stimulate and encourage research within the Discipline of Paediatrics.*



I'm here to give advice to all Research Academics, Conjoint, PhD Students (anyone involved with Paediatric research at UNSW) on funding opportunities, research application processes and ethics requirements. Therefore if you need help completing research grant applications, ethics proposals or any other related research documents – please don't hesitate to get in touch. Liaising with the Grants Management Office (GMO) is another area I can help with.

In addition to this, I will also be compiling this Paediatric Research Newsletter (quarterly) and will be happy to receive any ideas or news for the next edition or any questions / feedback on anything contained in this issue.

From time-to-time, I will also be contacting you for information on your research activities to help with compiling research reports, including a glossy annual report which is in the pipe-line for next year!

It's an exciting time to be involved with paediatric research and I look forward to meeting and working alongside you all.

Ph: 02 9382 3038 | Email: [s.mcfedries@unsw.edu.au](mailto:s.mcfedries@unsw.edu.au) |

### Sara Savige

Personal Assistant to Prof Adam Jaffé, Discipline  
of Paediatrics, School of Women's & Children's  
Health, UNSW Medicine

*My position as Personal Assistant involves working closely with Professor Adam Jaffé, providing administrative support and assistance.*

This will include but won't be limited to time and diary management, scheduling of meetings, organising travel, creating correspondence and minute taking.

With a background in administration in both corporate and hospital environments, I hope to bring to the department an efficient, organised and diplomatic working approach coupled with a friendly manner.

I look forward to being a part of the team and working with all of you.

Ph: 02 9382 1799 | Email: [s.savige@unsw.edu.au](mailto:s.savige@unsw.edu.au) |



## Important Notices:

### ■ **NHMRC Project Grant Workshop**

For funding commencing in 2014.  
Fri 5<sup>th</sup> Oct; 10am-12noon  
Old Main Building, G31

### ■ **Branding**

From Prof Peter Smith, Dean:  
*I wish to advise that as part of the objectives and vision of Medicine, and the branding and marketing refresh of UNSW and UNSW Medicine that we will be here forth referring to ourselves as **UNSW Medicine** (in place of the Faculty of Medicine).*

New logos can be found on the [UNSW Medicine website](#).



### ■ **Attributing UNSW in Publications**

It is important that researchers clearly & appropriately attribute UNSW in their publications.

With the re-branding to UNSW Medicine there has been a bit of confusion on how to do this. The following address should be used:

**UNSW Medicine, Faculty of  
Medicine, The University of New  
South Wales**

Consistency & clarity is important, to make sure that you and UNSW are properly credited with the work.

## Researcher Profile: Dr Tony Roscioli

As an NHMRC Post-Doctoral Fellow in the Discipline of Paediatrics, Dr Tony Roscioli's role is to promote genomics as both a research and clinical diagnostic tool – both of which he is achieving in leaps and bounds.

Dr Roscioli is an asset to the UNSW Paediatric Research community with ambitions we are extremely happy to support. His short to medium term goal includes leading a genomics investigative team for rare and other Mendelian disorders. In the longer term, he hopes that as a part of this group, to have transferred genomics into clinical practice while continuing with clinical work, teaching, and studies into gene identification.



Dr Roscioli's achievements so far, are nothing short of outstanding. To date he has received an NHMRC Overseas Training Fellowship which he completed at the University of Nijmegen in the Netherlands. This was followed by his current NHMRC Early Career Fellowship for research into gene-identification for non-syndromic intellectual disability and Walker-Warburg Syndrome.

In 2011, he received a prestigious Establishment Grant from the Ramaciotti Foundation to research a genetic diagnosis for Australian children with primary immunodeficiencies with potential to lead to the development of future therapies for globally important diseases.

In 2012, Dr Roscioli received a UNSW Gold Star Award for his research titled 'Gene identification in familial orofacial clefts by next generation sequencing of exomes and p63 regulatory elements.'

Dr Roscioli has also presented his research at a number of conferences and seminars, most recently at the Human Genetics Society of Australasia's 36<sup>th</sup> Annual Scientific Meeting held in Canberra, and at the forthcoming American Society of Human Genetics Meeting in San Francisco.

Dr Roscioli is contributing to an exciting time in Paediatrics at UNSW and cementing another strength for the Discipline, in genomic research.

***We look forward to watching Tony's career grow!***

### Publications

Krawitz, P.M., Murakami, Y., Hecht, J., Krüger, U., Holder, S.E., Mortier, G.R., Delle Chiaie, B., De Baere, E., Thompson, M.D., Roscioli, T., et al. Mutations in PIGO, a member of the GPI-anchor-synthesis pathway, cause hyperphosphatasia with mental retardation. *American Journal of Human Genetics*, 2012, 91(1): 146-151.

Kim, S.-D., Liu, J.L., Roscioli, T., et al. Leucine-rich repeat, immunoglobulin-like and transmembrane domain 3 (LRIT3) is a modulator of FGFR1. *FEBS Letters*, 2012, 586(10): 1516-1521.

Roscioli, T., Kamsteeg, E.-J., Buysse, K., et al. Mutations in ISPD cause Walker-Warburg syndrome and defective glycosylation of  $\alpha$ -dystroglycan. *Nature Genetics*, 2012, 44(5): 581-585.

Rivière, J.-B., Van Bon, B.W.M., Hoischen, A., Kholmanskikh, S.S., O'Roak, B.J., Gilissen, C., Gijzen, S., Sullivan, C.T., Christian, S.L., Abdul-Rahman, O.A., Atkin, J.F., Chassaing, N., Drouin-Garraud, V., Fry, A.E., Fryns, J.-P., Gripp, K.W., Kempers, M., Kleefstra, T., Mancini, G.M.S., Nowaczyk, M.J.M., Van Ravenswaaij-Arts, C.M.A., Roscioli, T., et al. De novo mutations in the actin genes ACTB and ACTG1 cause Baraitser-Winter syndrome. *Nature Genetics*, 2012, 44(4): 440-444.

Thompson, M.D., Roscioli, T., Marcellis, C., et al. Phenotypic variability in hyperphosphatasia with seizures and neurologic deficit (Mabry syndrome). *American Journal of Medical Genetics*, 2012, 158A(3): 553-558.

Cliffe, S.T., Bloch, D.B., Suryani, S., Kamsteeg, E.-J., Avery, D.T., Palendira, U., Church, J.A., Wainstein, B.K., Trizzino, A., Lefranc, G., Akatcherian, C., Megarbané, Gilissen, C., Moshous, D., Reichenbach, J., Misbah, S., Salzer, U., Abinun, M., Ong, P.Y., Stepensky, P., Ruga, E., Ziegler, J.B., Wong, M., Tangye, S.G., Lindeman, R., Buckley, M.F., Roscioli, T. Clinical, molecular, and cellular immunologic findings in patients with SP110-associated veno-occlusive disease with immunodeficiency syndrome. *Journal of Allergy and Clinical Immunology*. In Press.

## UNSW Major Research Equipment & Infrastructure Initiative

The Major Research Equipment and Infrastructure Initiative (MREII) is a strategic investment in major research infrastructure and equipment in order to enable UNSW researchers to work at the cutting edge of local, national and international research UNSW. The funding scheme supports research in Faculties and disciplines to build a world-class research environment that underpins research excellence in UNSW's areas of Research strength.

Applicants must be members of the academic staff of the University, and on the payroll of the University or have been formally appointed according to established processes for Conjoint or Clinical appointments for Area Health Services or Affiliated Research Institutes. Applications are submitted through, and ranked by, Faculties with the final decision on funding being made by the Deputy Vice-Chancellor (Research) in consultation with Deans and Associate Deans (Research).

The closing date for applications (for funding in the following year) is set by each Faculty, and is typically prior to the end of October. Faculty Deans submit their ranked list to the Deputy Vice-Chancellor (Research) by the due date, and decisions are released typically in late November/early December, in order to take into account the outcomes of external ARC and NHMRC major equipment schemes that are generally announced in November.

Click for: [2013 Guidelines and Application Form](#).

Faculty Deadline for Applications: 1<sup>st</sup> October 2012

All applications should be submitted to Wendy Wartho, Office of Medical Research: [w.wartho@unsw.edu.au](mailto:w.wartho@unsw.edu.au)

## External Review of Medicine

*The President and Vice-Chancellor of UNSW, Professor Fred Hilmer AO, has initiated an external review of the Faculty of Medicine to assist with strategic planning for the next 5-10 years. An important focus of the review will be the research activities and performance of the Faculty.*

*The Review Panel will convene in January 2013 and will conduct a series of meetings with key stakeholders in the Faculty and in the broader UNSW community.*

Prof Denis Wakefield, Associate Dean (Research) Medicine

Yet another huge thank-you to everyone who provided information on their department / sub-speciality within Paediatrics!

The Faculty of Medicine Review (although time-consuming) is something we definitely want to be actively involved in so as not to miss out the opportunity to speak up about Paediatrics and impact upon the distribution of highly sought after commodities such as funding and space.

We also want to make sure that paediatrics and all the sub-specialities that make up the discipline are recognised as one of UNSW Medicine's research strengths and are therefore well-represented in any future strategy!

## Congratulations to:



- Prof Glenn Marshall and his co-Chief Investigators, Professors Michelle Haber and Murray Norris (pictured) for their research in improving the outcomes of children with cancer being recognised by the NHMRC as one of Australia's best research projects in 2012.
- Andrew Day who has been promoted to Conjoint Professor.
- Karen Zwi who has been promoted to Conjoint Associate Professor.
- Kevin Swill who has been promoted to Conjoint Lecturer.
- Dr Graham Wise who was made an Honorary Professor at UNSW as an acknowledgement of his achievement, expertise and leadership in paediatric neurology.

## External Review of Paediatrics

Thank you to everyone who took the time to meet with the Panel and / or provide written submissions on their research / department / sub-speciality within Paediatrics.

This information is invaluable in strategising the direction of the Discipline and also assessing where our strengths are and what areas need more support and development.

It also allows us to determine how aligned we are with UNSW Medicine, Sydney Children's Hospital & Hospital Network's research priority.

Prof Craig Mellis and Prof Paul Monagle who made up our external panel, have also expressed their gratitude at the time many of you gave up to meeting with them – some at quite short notice.

*Again, thank you all!*



## Library

Recently, Adam met with Kate Dunn – the Outreach Librarian from UNSW for our School. Kate's role is to be the direct communication link with the library and to provide support to the Discipline of Paediatrics in both research and teaching.

Kate is also there to keep us up-to-date with Library Mobile Content i.e. useful apps for mobile phones, iPads, tablets etc; new journals, print and e-Book purchases. She will also help with the tracking of research impact and provide advice on publishing strategically.

To the left you will see recent Paediatric e-Books purchased by the library for staff and student access. Click to follow the links – you will need to enter your zNumber and zPass to access.

Unfortunately Kate was on leave for this edition of the Paediatric Research Newsletter, however in the next edition we hope to have a column from Kate detailing where specifically she can help, any news from the library, advice etc.

If you have any questions that you would like Kate to answer in the next edition, please email [s.mcfedries@unsw.edu.au](mailto:s.mcfedries@unsw.edu.au) by Friday 16<sup>th</sup> November.

## Authorship Rules

### Are there any rules on Authorship?

*Q. Someone I work with says she should have been an author on a paper as her patients were used in the study- are there any rules about Authorship?*

**A. Yes there are guidelines on who should be an author.**

Some very good general advice comes from the International Committee of Medical Journal Editors (ICMJE). UNSW specific advice on authorship can be found in the Research Code of Conduct and in a document on the Procedure for authorship and resolving disputes between authors.

UNSW criteria for authorship are summarised as follows:

- a) An author must have had a substantial intellectual contribution to the paper, where one of the following conditions are met: a) conception and design; and/or b) analysis and interpretation of data; and/or c) drafting the article or revising it critically so as to contribute to the interpretation.
- b) Acquisition of funding, the collection of data, general supervision of the research group, provision of technical assistance or materials by themselves, do not justify authorship.
- c) The criteria for authorship (including the order of authors) vary according to research discipline.
- d) No person who is an author, consistent with the criteria for authorship, may be excluded as an author without their permission in writing. Similarly, no person who has contributed to the acquisition of funding, or the collection of research data, can be intentionally excluded from its analysis or interpretation for the purpose of authorship.
- e) All contributors and Institutes who do not meet the criteria for authorship should be listed in an Acknowledgments section.

### Top Tip:

Agree on authorship (and order of authors) **prior to** starting a study. Ideally this should be confirmed in writing (email will do) as it will help resolve any disputes in the future.

- Each author should have participated sufficiently in the work to take public responsibility for appropriate portions of the content.
- All contributors who do not meet the criteria for authorship should be listed in an Acknowledgments section.

## e-Books

- [Illustrated Textbook of Paediatrics](#), Lissauer, 2007
- [The Harriet Lane Handbook](#), 2011
- [Pediatric secrets](#), 2011
- [Rapid paediatrics and child health](#), 2011
- [Examination Paediatrics](#), 2011
- [Berman's Pediatric Decision Making](#), 2011
- [Nelson Essentials of Pediatrics](#), 2010
- [Nelson textbook of paediatrics](#), 2011
- [Pediatrics : a competency-based companion](#), 2011
- [Neonatology at a glance](#), Lissauer 2011
- [Infectious diseases of the fetus and newborn infant](#), 2011
- [Management of Pediatric Obesity and Diabetes](#), 2011
- [Paediatric Endocrinology and Diabetes](#), 2011
- [Autism and Pervasive Developmental Disorders Sourcebook](#), 2011
- [Pediatric radiology the requisites](#), 2009
- [Pediatric oncology a comprehensive guide](#), 2011
- [Pediatric urology](#), 2010
- [Pediatric Critical Care](#), 2011
- [Clinical Pediatric Neurology](#), 2009
- [Stroke in Children and Young Adults](#), 2011
- [Ashcraft's Pediatric Surgery](#), 2010
- [Manual of Pediatric Hematology and Oncology](#), 2011
- [Attention, genes, and developmental disorders](#), 2010
- [Tavistock Model : Papers on Child Development and Psychoanalytic Training](#), 2011
- [Motherhood and Postnatal Depression : Narratives of Women and Their Partners](#), 2011
- [Pediatric Allergy: Principles and Practice](#), 2010
- [Working With Children to Heal Interpersonal Trauma](#), 2010
- [Understanding children and young people's mental health](#), 2010
- [Young people and alcohol](#), 2011
- [Developmental-Behavioral Pediatrics](#), 2008
- [A Practice of Anesthesia for Infants and Children](#), 2009

## Researcher Profile – Dr Michelle Farrar

We are delighted to profile Dr Michelle Farrar who has recently completed her PhD within the Discipline of Paediatrics titled "The Pathophysiology of Spinal Muscular Atrophy."

Dr Farrar's research utilises a combination of clinical, epidemiological, neurophysiological and genetic studies to examine the disease course and pathophysiology of motor neuron dysfunction in spinal muscular atrophy.

These studies have established unique and mixed pathophysiological processes throughout the motor axis in SMA. These include concurrent peripheral neurodegeneration and regeneration, with central neuroplasticity and provide insight into the unique clinical course of SMA. Importantly these studies may influence future treatment strategies in SMA and enable further pathophysiological investigations among various paediatric neuropathies at disease onset.



Dr Farrar's recent achievements have included a number of awards, grants and publications making her one of our young researchers to watch. Earlier this year, Dr Farrar was an invited presenter and convenor of the peripheral neuropathy workshop at the 12<sup>th</sup> International Child Neurology Congress and 11<sup>th</sup> Asian and Oceanian Congress of Child Neurology held in Brisbane.

In 2011, she gave a platform presentation at the 22<sup>nd</sup> International Symposium on ALS / MND titled 'Mechanisms of peripheral axonal neurodegeneration in spinal muscular atrophy'. In this same year, she was also the recipient Pfizer Neurosciences Research Grant (value: \$36,300).

She also received the Australia and New Zealand Association of Neurologists James Lance Young Investigator Award for her research titled 'Mechanisms of neurodegeneration in spinal muscular atrophy' in 2010 and a National Health & Medical Research Council (NHMRC) Postgraduate Scholarship in 2008.

These prestigious accolades in addition to a growing number of first-author publications show that Dr Farrar's academic future is very exciting and we are extremely pleased to have her as a member of our UNSW Paediatric Research community. We look forward to seeing the impact her research has on motor neuron dysfunction in spinal muscular atrophy and her contribution to paediatric neurology as a whole.

***Congratulations Michelle!***

### Publications:

Farrar MA, Vucic S, Johnston, HM, Kiernan M. Corticomotoneuron integrity and adaptation in spinal muscular atrophy. *Archives of Neurology*; 2012, 69 (4): 467-473.

Farrar MA, Vucic S, Lin CSY, Park S, Johnston HM, du Sart D, Bostock H Kiernan M. Dysfunction of axonal membrane conductances in adolescents and young adults with spinal muscular atrophy. *Brain* 2011, 134: 3185-3197.

Farrar MA, Kiernan M. Spinal Muscular Atrophy. In: *Encyclopaedia of Life Sciences 2011*, John Wiley & Sons, Ltd: Chichester <http://www.els.net/> [DOI:10.1002/9780470015902.a0006011.pub2]

Farrar MA, Lin CSY, et al. Acute, reversible axonal energy failure during a stroke-like episode in MELAS *Pediatrics* 2010; 126(3) e734-9. Impact factor 4.789, the highest in the field of general paediatrics.

Farrar MA, Johnston HM, et al. Spinal Muscular Atrophy: Molecular Mechanisms. *Current Molecular Medicine* 2009; 9(7): 851-62. Invited Review. Impact factor 5.254

Farrar MA, Vucic S, Johnston, HM, Kiernan M. Pathophysiological insights derived by natural history of spinal muscular atrophy. *Journal of Pediatrics* 2012.

## Funding Opportunities:

### September

- The Ian Potter Foundation – Travel & Conference Grants  
Applications Due: 3<sup>rd</sup> Sept 2012
- Australian Harvard Fellowships  
Applications Due: 3<sup>rd</sup> Sept 2012
- Heart Foundation – Summer Scholarship  
Applications Due: 14<sup>th</sup> Sept 2012  
*For undergraduate students to engage in biomedical, clinical, or public health research relevant to cardiovascular disease & related disorders for 6-8 weeks over summer uni break.*
- Leukaemia Foundation – PhD Scholarship  
Applications Due: 14<sup>th</sup> Sept 2012  
*Leukaemia, lymphoma, myeloma, & blood disorders: clinical & non-clinical.*
- Cancer Council NSW Strategic Partnership Grants  
Applications Due: 21<sup>st</sup> September 2012
- NHMRC Partnerships Projects 2012  
From 2012 there are now three funding rounds per year:  
Second Call Applications Due: 25<sup>th</sup> Sep 2012
- Financial Markets Foundation for Children Grant  
Applications Due: 30<sup>th</sup> Sept 2012  
*Health & well-being of children in Australia*

### October

- UNSW Major Equipment & Infrastructure Initiative  
Applications Due: 1<sup>st</sup> Oct 2012
- Nursing & Allied Health Scholarship and Support Scheme  
Clinical Psychology Scholarship  
Applications Due: 1<sup>st</sup> Oct 2012
- Boehringer Ingelheim Fonds PhD Fellowship  
Applications Due: 1<sup>st</sup> Oct 2012  
*Europe, <27 years old, biomedical science.*
- Go8 European Fellowships  
Applications Due: 3<sup>rd</sup> Oct 2012
- Australian Rotary Health – Ian Scott PhD Scholarship  
Applications Due: 5<sup>th</sup> October 2012  
*Mental Health focus.*

- JDRF / Macquarie Group Foundation Early-Stage Researcher Travel Grants  
Applications Due: 8<sup>th</sup> Oct 2012
- Cure Cancer Research Foundation  
Applications Due: TBA
- Nursing & Allied Health Scholarship and Support Scheme  
Allied Health Postgraduate Scholarship  
*Allied Health, Indigenous Health, Clinical Service.*  
Allied Health Continuing Professional Development Scholarship  
*Short courses, conferences, non-award postgrad modules, clinical placements.*  
Applications Due: 15<sup>th</sup> Oct 2012
- UNSW Postgraduate Research Scholarships  
Semester 1, 2013 – Domestic Students  
Applications Due: 19<sup>th</sup> Oct 2012
- Juvenile Diabetes Research Foundation / Macquarie Group Foundation Travel Grant Program  
Applications Due: 19<sup>th</sup> Oct 2012
- Swiss Government Excellence Scholarships  
Post-Doctoral Scholarship  
PhD Scholarship  
Research Scholarship  
Applications Due: 22<sup>nd</sup> Oct 2012
- Childhood Cancer Association Research & Study Grant  
Applications Due: 31<sup>st</sup> Oct 2012  
*Child cancer, medical, nursing, allied health.*
- NSi Collaborative Research Projects  
Applications Due: 31<sup>st</sup> Oct 2012

### November

- Juvenile Diabetes Research Foundation  
Autoimmunity and Beta Cell Cure and Prevention Translational Centres  
Applications Due: 1<sup>st</sup> Nov 2012  
Strategic Research Agreement  
Applications Due: 1<sup>st</sup> Nov 2012  
High Priority, Short-Term Bridge Awards  
Applications Due: 2<sup>nd</sup> Nov 2012

## Grant Applications Accepted Throughout the Year

- Juvenile Diabetes Research Foundation  
Conference Grants  
*Hosting conferences, scientific meetings, & workshops relevant to the JDRF mission.*
- Boehringer Ingelheim Fonds Travel Grant  
*Short-term visits to Europe – Early Career, PhD, Post-Doc*

## Coming up in 2013

- Heart Foundation  
Grants-in-Aid  
Career Development Fellowships  
Overseas Research Fellowships  
Post-Doctoral Fellowships  
*Cardiovascular disease & related disorders.*
- Cystic Fibrosis Australia  
Project (applications facilitated by NHMRC)  
ACFRT Studentship Award  
Post-Graduate Studentship
- UNSW Postgraduate Research Scholarships  
Semester 2, 2013 – Domestic Students  
Applications Due: 1st March 2013  
Semester 2, 2013 – International Students  
Applications Due: 24th May 2013
- NHMRC Partnerships Projects  
2012  
Third Call Applications Due: 29<sup>th</sup> Jan 2013  
First Call Applications Due: 30<sup>th</sup> April 2013
- Ramaciotti Biomedical Research  
Award  
Applications Due: Feb 2013  
*Biomedical research, personnel, equipment, major infrastructure improvement.*

## Events · Seminars · Training

### September

- Post-Doc Academy Program:  
*Optimising your chances of getting published' – Prof Andrew Lloyd: Thu 6<sup>th</sup> Sept; 4:00pm*
- ARC Linkage Information Sessions:  
*'How to Strategically Tackle the New Changes':  
Fri 7<sup>th</sup> Sept; 11:00am-1:00pm (Repeat Session)  
Rupert Myers Theatre*
- Supervisor Development Series:  
*'How to be a good supervisor – Putting policies & procedures into practice':  
Tues 11<sup>th</sup> Sept; 10:00am-12:30pm  
Old Main Building, Room LG31*
- Microtubule Proteins in Cancer: Drug resistance, tumour growth & metastasis  
Prof Maria Kavallaris (CCIA)  
Wed 12<sup>th</sup> Sept; 4:00pm – 5:00pm  
Lowy Cancer Research Centre, Level 4
- Future Leaders Program: Intellectual Property & Commercialisation  
Wed 19<sup>th</sup> Sept; 9:30am-2:00pm  
John Goodsell Building, Room LG19
- 4<sup>th</sup> Annual Symposium – 'Advance in Public Health & Health Services Research at UNSW'  
Fri 21<sup>st</sup> Sept; 8:00am-5:00pm  
John Niland Scientia Building
- Supervisor Development Series:  
*'Understanding HDR expectations through positive communication':  
Wed 26<sup>th</sup> Sept; 10:30am-12:30am  
Civil Engineering Building, Room 701*

### October

- Post-Doc Academy Program:  
*Applying for grants – Show me the money' – Dr Laurent Rivory:  
Thu 4<sup>th</sup> Oct; 4:00pm*
- Future Leaders Program: Managing & Leading People in a Research Context  
Thur 18<sup>th</sup> Oct; 9:30am-2:00pm  
John Goodsell Building, Room LG19
- Thesis Submission Seminar:  
Tues 23<sup>rd</sup> Oct; 12:00pm-2:00pm  
Venue TBC

### November

- Future Leaders Program: Project Closeout  
Thur 1<sup>st</sup> Nov; 9:30am-2:00pm  
John Goodsell Building, Room LG19

For further information on this newsletter or to contribute to the next edition, please contact:

*Samantha McFedries – Research Coordinator*  
Discipline of Paediatrics

School of Women's & Children's Health  
UNSW Medicine  
Sydney Children's Hospital  
High Street Randwick NSW 2031

T: +61 (2) 9382 3038

F: +61 (2) 9382 1401

E: [s.mcfedries@unsw.edu.au](mailto:s.mcfedries@unsw.edu.au)



## Publications

### September 2012:

Bhadri, V.A., Beckett, S.M., Duncan, C., Marshall, G.M., Ashton, L.J. Variation in Toll-like receptor 9 gene modifies the risk of infection in children treated for acute lymphoblastic leukemia. *Leukemia and Lymphoma*, 2012, 53(9): 1828-1830.

### August 2012:

Bhadri, V.A., Trahair, T.N., Lock, R.B. Glucocorticoid resistance in paediatric acute lymphoblastic leukaemia. *Journal of Paediatrics and Child Health*, 2012 48(8): 634-640.

Chuang, S., Jaffe, A. Cost considerations of therapeutic options for children with asthma. *Pediatric Drugs*, 14(4): 211-220.

McLoone J., Watts K., Menzies S., Meiser B., Butow P., Kasparian N. When the risks are high: Psychological adjustment among melanoma survivors at high risk of developing new primary disease. *Qualitative Health Research*, 2012, 22(8): 1102-1113.

Ritchie A.G., Clayton P.A., MacKie F.E., Kennedy S.E. Nationwide survey of adolescents and young adults with end-stage kidney disease. *Nephrology*, 2012, 17(6): 539-544.

### In Press:

Hallab J.C., Leach S.T., Zhang L., Mitchell H.M., Oei J., Lui K., Day A.S. Molecular Characterization of Bacterial Colonization in the Preterm and Term Infant's Intestine. *Indian Journal of Pediatrics*.

Lambert B., Lemberg D.A., Leach S.T., Day A.S. Longer-Term Outcomes of Nutritional Management of Crohn's Disease in Children. *Digestive Diseases and Sciences*.

Day A.S., Judd T., Lemberg D.A., Leach S.T. Fecal M2-PK in Children with Crohn's Disease: A Preliminary Report. *Digestive Diseases and Sciences*.

McLoone J.K., Wakefield C.E., Yoong S.L., Cohn R.J. Parental sleep experiences on the pediatric oncology ward. *Supportive Care in Cancer*.

Clifford A., Shakeshaft A., Deans C. Training and tailored outreach support to improve alcohol screening and brief intervention in Aboriginal Community Controlled Health Services. *Drug and Alcohol Review*.

Abdel-Latif M.E., Oei J., Craig F., Lui K. Profile of infants born to drug-using mothers: A state-wide audit. *Journal of Paediatrics and Child Health*.

Ooi C.Y., Durie P.R. Cystic fibrosis transmembrane conductance regulator (CFTR) gene mutations in pancreatitis. *Journal of Cystic Fibrosis*.

Calao, M., Sekyere, E.O., Cui, H.J., Cheung, B.B., Thomas, W.D., Keating, J., Chen, J.B., Raif, A., Jankowski, K., Davies, N.P., Bekkum, M.V., Chen, B., Tan, O., Ellis, T., Norris, M.D., Haber, M., Kim, E.S., Shohet, J.M., Trahair, T.N., Liu, T., Wainwright, B.J., Ding, H.F., Marshall, G.M. Direct effects of Bmi1 on p53 protein stability inactivates oncoprotein stress responses in embryonal cancer precursor cells at tumor initiation. *Oncogene*.

Hogan, J., Turner, A., Tucker, K., Warwick, L. Unintended Diagnosis of Von Hippel Lindau Syndrome Using Array Comparative Genomic Hybridization (CGH): Counseling Challenges Arising from Unexpected Information. *Journal of Genetic Counseling*.

Cohen, J., Laing, D.G., Wilkes, F.J. Taste and smell function in pediatric blood and marrow transplant patients. *Supportive Care in Cancer*.

Johnson, A.M., Dale, R.C., Wienholt, L., Hadjivassiliou, M., Aeschlimann, D., Lawson, J.A. Coeliac disease, epilepsy, and cerebral calcifications: Association with TG6 autoantibodies. *Developmental Medicine and Child Neurology*.

King, B.R., Howard, N.J., Verge, C.F., Jack, M.M., Govind, N., Jameson, K., Middlehurst, A., Jackson, L., Morrison, M., Wajira S Bandara, D. A diabetes awareness campaign prevents diabetic ketoacidosis in children at their initial presentation with type 1 diabetes. *Pediatric Diabetes*.

Chen, A.C.-C., Mcrae, M.Y., Wargon, O. Clinical characteristics and risks of large congenital melanocytic naevi: A review of 31 patients at the Sydney Children's Hospital. *Australasian Journal of Dermatology*.

Christou, E.M., Wargon, O. Effect of captopril on infantile haemangiomas: A retrospective case series. *Australasian Journal of Dermatology*.

Oei, J.L., Kingsbury, A., Dhawan, A., Burns, L., Feller, J.M., Clews, S., Falconer, J., Abdel-Latif, M.E. Amphetamines, the pregnant woman and her children: a review. *Journal of Perinatology*.

Elahi, M.M., Houg, C., Trahair, T., Ravindranathan, H., Grant, P.W. Extracorporeal Membrane Oxygenation Support in a Situation of Diagnostic Dilemma. *Heart Lung and Circulation*.

Empson, M.B., Tang, M.L.K., Pearce, L.K.C., Rozen, L., Gold, M.S., Katelaris, C.H., Langton, D., Smart, J., Smith, W.B., Steele, R.H., Ziegler, J.B., Maher, D. Efficacy, Safety and Pharmacokinetics of a Novel Subcutaneous Immunoglobulin, Evogam Å®, in Primary Immunodeficiency. *Journal of Clinical Immunology*.

Michot, C., Hubert, L., Romero, N.B., Gouda, A., Mamoune, A., Mathew, S., Kirk, E., Viollet, L., Rahman, S., Bekri, S., Peters, H., McGill, J., Glamuzina, E., Farrar, M., von der Hagen, M., Alexander, I.E., Kirmse, B., Barth, M., Laforet, P., Benlian, P., Munnich, A., JeanPierre, M., Elpeleg, O., Pines, O., Delahodde, A., de Keyzer, Y., de Lonlay, P. Study of LPIN1, LPIN2 and LPIN3 in rhabdomyolysis and exercise-induced myalgia. *Journal of Inherited Metabolic Disease*.

Ling, D., Marshall, G.M., Liu, P.Y., Xu, N., Nelson, C.A., Iismaa, S.E., Liu, T. Enhancing the anticancer effect of the histone deacetylase inhibitor by activating transglutaminase. *European Journal of Cancer*.

Woolfenden, S., Sarkozy, V., Ridley, G., Coory, M., Williams, K. A systematic review of two outcomes in autism spectrum disorder - epilepsy and mortality. *Developmental Medicine and Child Neurology*.

Cliffe, S.T., Bloch, D.B., Suryani, S., Kamsteeg, E.-J., Avery, D.T., Palendira, U., Church, J.A., Wainstein, B.K., Trizzino, A., Lefranc, G., Akatcherian, C., Megarbané, Gilissen, C., Moshous, D., Reichenbach, J., Misbah, S., Salzer, U., Abinun, M., Ong, P.Y., Stepensky, P., Ruga, E., Ziegler, J.B., Wong, M., Tangye, S.G., Lindeman, R., Buckley, M.F., Roscioli, T. Clinical, molecular, and cellular immunologic findings in patients with SP110-associated veno-occlusive disease with immunodeficiency syndrome. *Journal of Allergy and Clinical Immunology*.

Böhm, J., Biancalana, V., Dechene, E.T., Bitoun, M., Pierson, C.R., Schaefer, E., Karasoy, H., Dempsey, M.A., Klein, F., Dondaine, N., Kretz, C., Haumesser, N., Poirson, C., Toussaint, A., Greenleaf, R.S., Barger, M.A., Mahoney, L.J., Kang, P.B., Zanolli, E., Vissing, J., Witting, N., Echaniz-Laguna, A., Wallgren-Pettersson, C., Dowling, J., Merlini, L., Oldfors, A., Bomme Ousager, L., Melki, J., Krause, A., Jern, C., Oliveira, A.S.B., Petit, F., Jacqueline, A., Chaussenot, A., Mowat, D., Leheup, B., Cristofano, M., Poza Aldea, J.J., Michel, F., Furby, A., Llona, J.E.B., Van Coster, R., Bertini, E., Urtizberea, J.A., Drouin-Garraud, V., Bérout, C., Prudhon, B., Bedford, M., Mathews, K., Erby, L.A.H., Smith, S.A., Roggenbuck, J., Crowe, C.A., Brennan Spitala, A., Johal, S.C., Amato, A.A., Demmer, L.A., Jonas, J., Darras, B.T., Bird, T.D., Laurino, M., Welt, S.I., Trotter, C., Guicheney, P., Das, S., Mandel, J.-L., Beggs, A.H., Laporte, J. Mutation spectrum in the large GTPase dynamin 2, and genotype-phenotype correlation in autosomal dominant centronuclear myopathy. *Human Mutation*.

## Next Edition

The next edition of the Paediatric Research Newsletter will be published on Monday 9<sup>th</sup> December 2012.

If you would like to contribute to the next edition, please [contact Sam](#) by Friday 16<sup>th</sup> November 2012.

Feedback and suggestions for content will be greatly received!

Ph: 02 9382 3038 | Email: [s.mcfedries@unsw.edu.au](mailto:s.mcfedries@unsw.edu.au) |

**Discipline of Paediatrics** | School of Women's & Children's Health | UNSW Medicine | Sydney Children's Hospital  
| High Street Randwick NSW 2031 | T +61 (2) 9382 3038 | F +61 (2) 9382 1401